



**GPEXC-103SD**

**OPERATION MANUAL**

[www.getpacked.com.au](http://www.getpacked.com.au) [sales@getpacked.com.au](mailto:sales@getpacked.com.au)

2009/05/12

# **1. GENERAL**

1.1 Notice of installment . . . . .	2
1.2 Notice of operation . . . . .	2

# **2. SPECIFICATION**

2.1 Spec. table . . . . .	3
2.2 Machine dimension . . . . .	4
2.3 Machine description. . . . .	5

# **3. OPERATION DESCRIPTION**

3.1 Installment . . . . .	6
3.2 Operation of control panel . . . . .	9

# **4. COUNTER INSTRUCTION . . . . . 10**

# **5. ELECTRIC**

5.1 Electric capacity . . . . .	10
5.2 Electric diagram . . . . .	11

# **6. TROUBLE SHOOTING**

6.1 Belt adjustment . . . . .	15
6.2 Fuse replacement . . . . .	15

# **7. PARTS LIST**

7.1 Side belt . . . . .	16
7.3 Column. . . . .	19
7.3 Machine body . . . . .	22

# **1. GENERAL**

## **1.1 Notice of installment**

To make sure of a safe and correct operation, please check the below items before installing the machine:

- 1) Power source capacity must be larger than the machine need.
- 2) A shorter ground wire is better.
- 3) Machine standard power is 110V/220V (-15% - +10%).
- 4) Machine standard power Hertz is 50/60 Hz. ( $\pm 2\%$ )
- 5) Machine is good between temperatures  $0^{\circ}\text{C}$  -  $45^{\circ}\text{C}$  .
- 6) Any thing/substance around the machine should not produce loud noise and vibration.

## **1.2 Notice of operation**

To have good protection for the operator, please make sure of the following conditions:

- 1) Before operating, please read the machine manual carefully.
- 2) Make sure no good have been put on the power cable.
- 3) Make sure no goods been have put on the upper tape head unit.
- 4) Don't allow damp parts or water to touch the electric parts.

## 2. SPECIFICATION

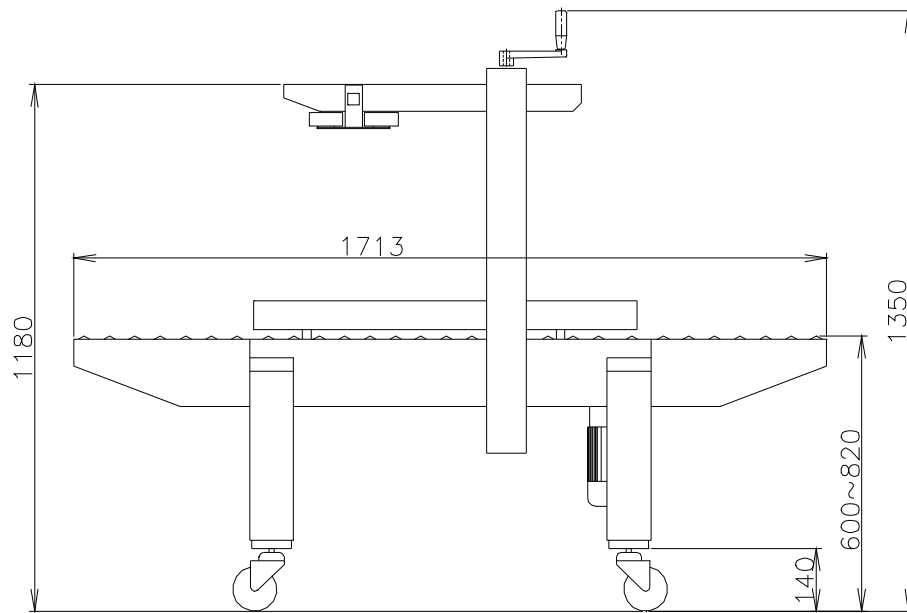
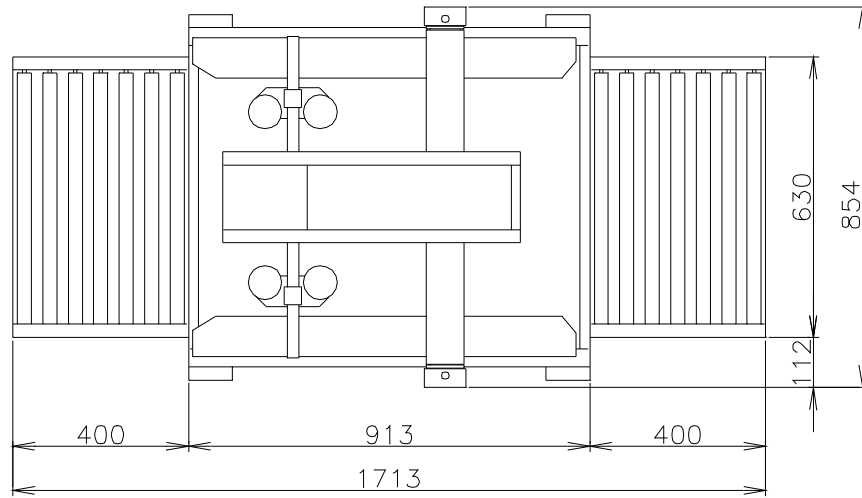
### 2.1 Spec. table

model	EXC-103SD
Tape	36mm(1.5") or 50mm(2")
Belt speed	23m/min
Capacity	(L) 120mm~unlimited (W) 100mm~500mm (H) 120mm~500mm
Consumption	450W
Machine size	1713mm(L)x854mm(W)x1350mm(H)
Sound level	60dB
Machine net weight	160KG

#### Standard option:

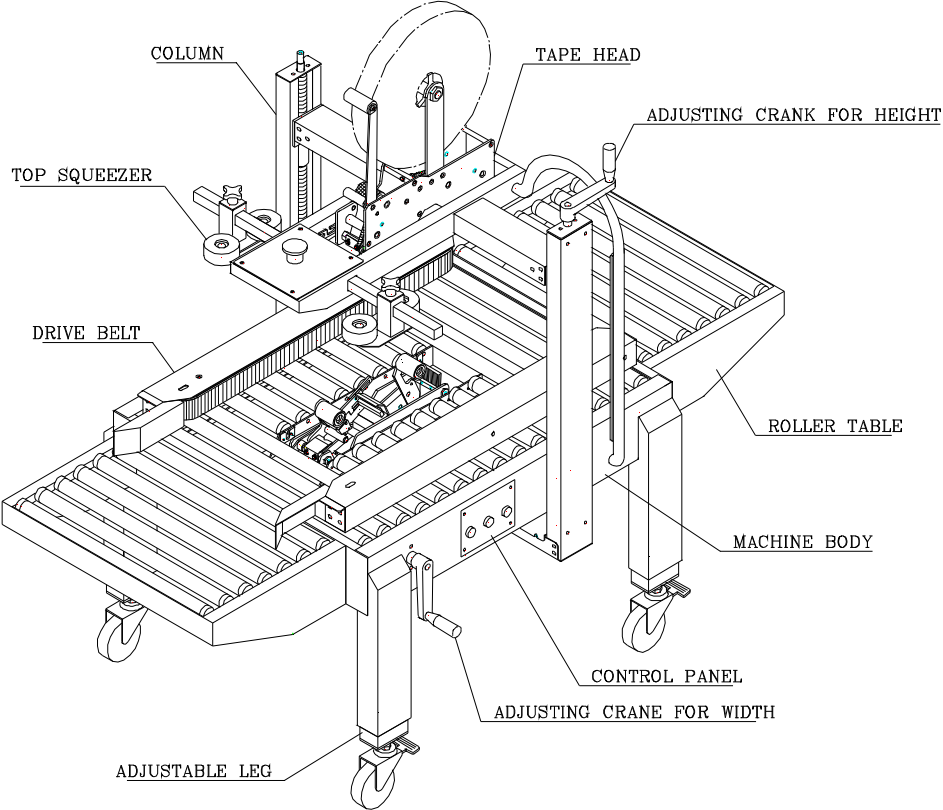
- Stainless plant
- 3" tape head
- CASE SIZE : 700mm(W) X 700mm(H)

## 2.2 Machine dimension



EXC-103SD

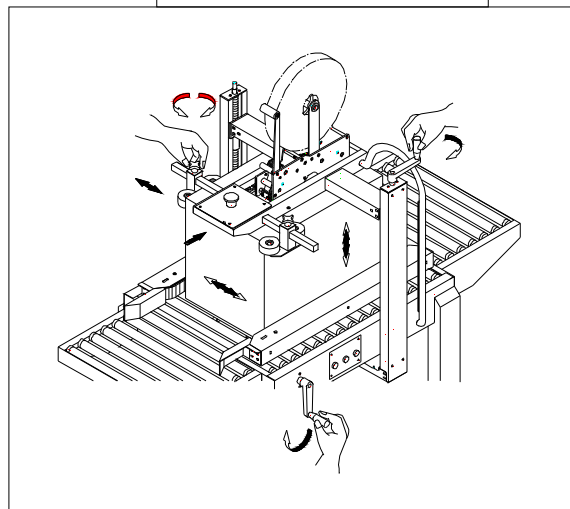
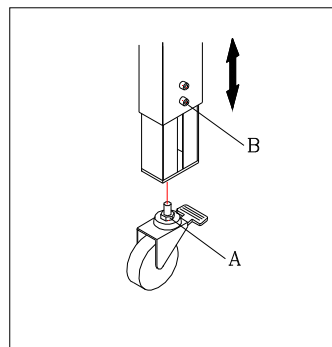
### 2.3 Machine description



### 3. OPERATION DESCRIPTION

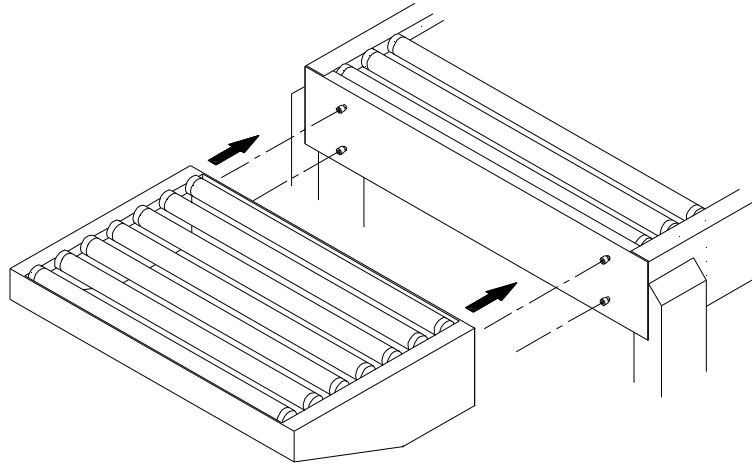
#### 3.1 Installment

- 1) Open the box. Please remove carefully to avoid damaging the machine.
- 2) Lift the machine to install casters (4 wheels), at the same time tighten the A nut to fix the casters in place.
- 3) Set the machine to the desired height, then tighten the B screw.



- 4) Set up the machine and move to the desired place.

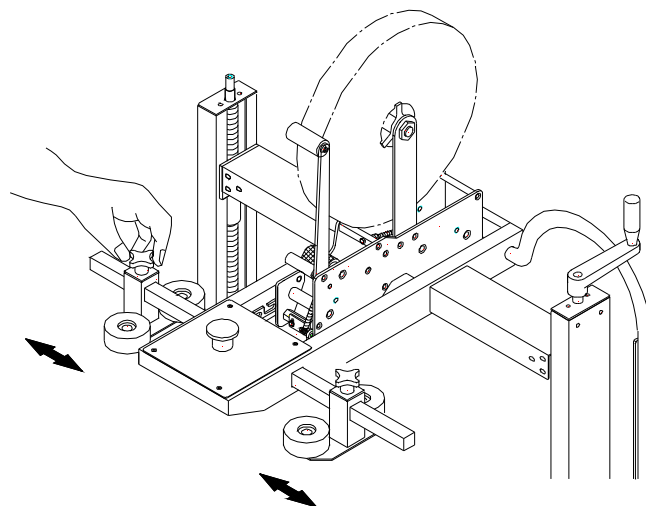
5) Attach the roller table to the machine body.



6) Load the tape head with tape. (Please refer to the tape head instruction manual)

7) Place a box filled with product on the in feed conveyor, position on the side drive belts and top section to accommodate the desired box width and height by using the width and height adjustment crank.

Follow by adjusting the tow handle knobs against the sides of carton to secure the carton's center.

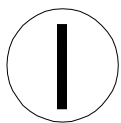
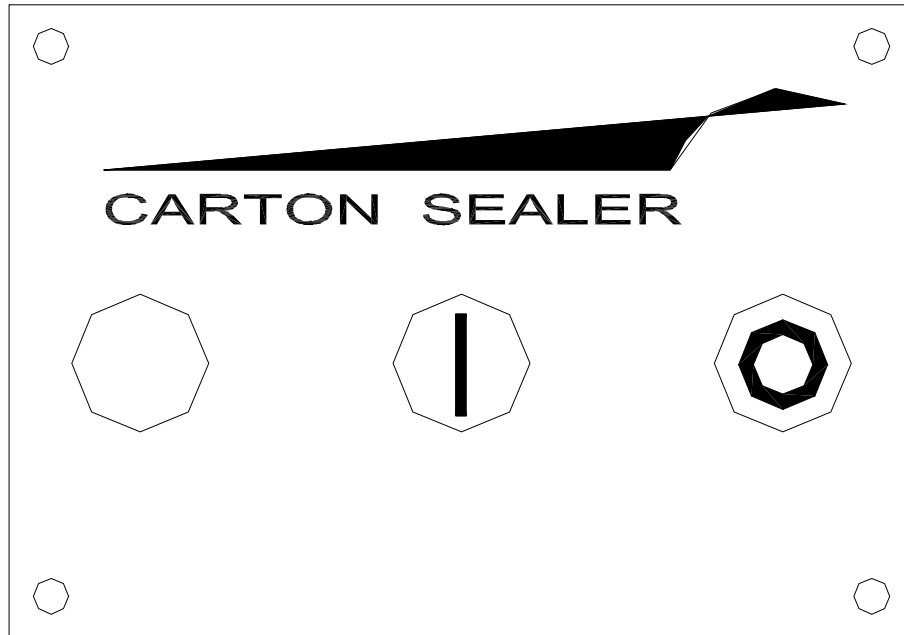




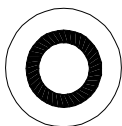
8) Connect the power cable with the socket to a 110V/220V power source.

9) Plug in, press "start" button for testing.

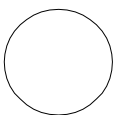
### 3.2 OPERATION OF CONTROL PANEL



Press to start motors and belts.



Press to stop motors and belts.



Power indicator will be off; when carton sealer is in operation.  
Power indicator will be on: when carton sealer is not in operation.

## 4. COUNTER INSTRUCTION

1. It is forbidden to cancel, disassemble, modify or not respect the implemented safety measures. In that case, the manufacturer will not be hold responsible for any possible damage caused.
2. Do not use the machine in a place where water and oil might splash
3. Use only the specify power supply cable
4. Do not pull the power supply cable to move the machine. It will damage or break the cord
5. Do not use the machine in any way which is not specified in this manual
7. It is forbidden to exceed the limits of use and operation on what regards weights and sizes of loads.
8. It is forbidden to use the machine with unstable loads which show hazard of falling.

## 5. ELECTRIC

### 5.1 Electric capacity

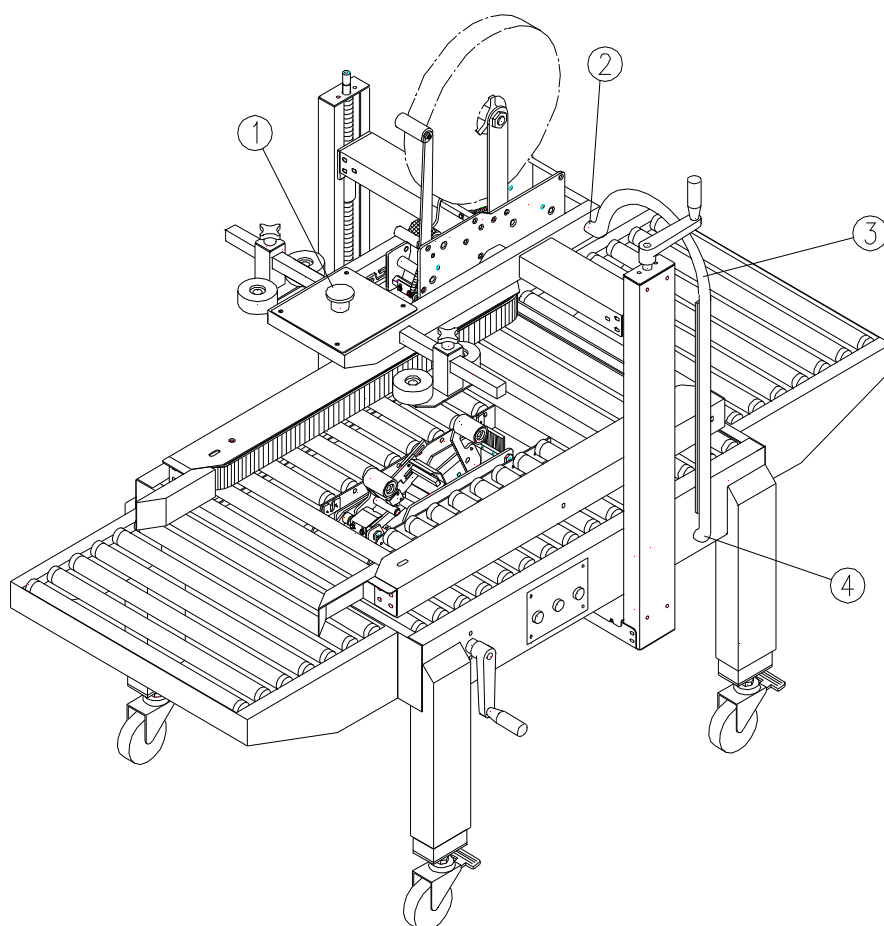
#### 1)Power consumption

Belt motor	0.18KVA	
Machine power use	0.4KVA	
Power socket need	0.5KVA	

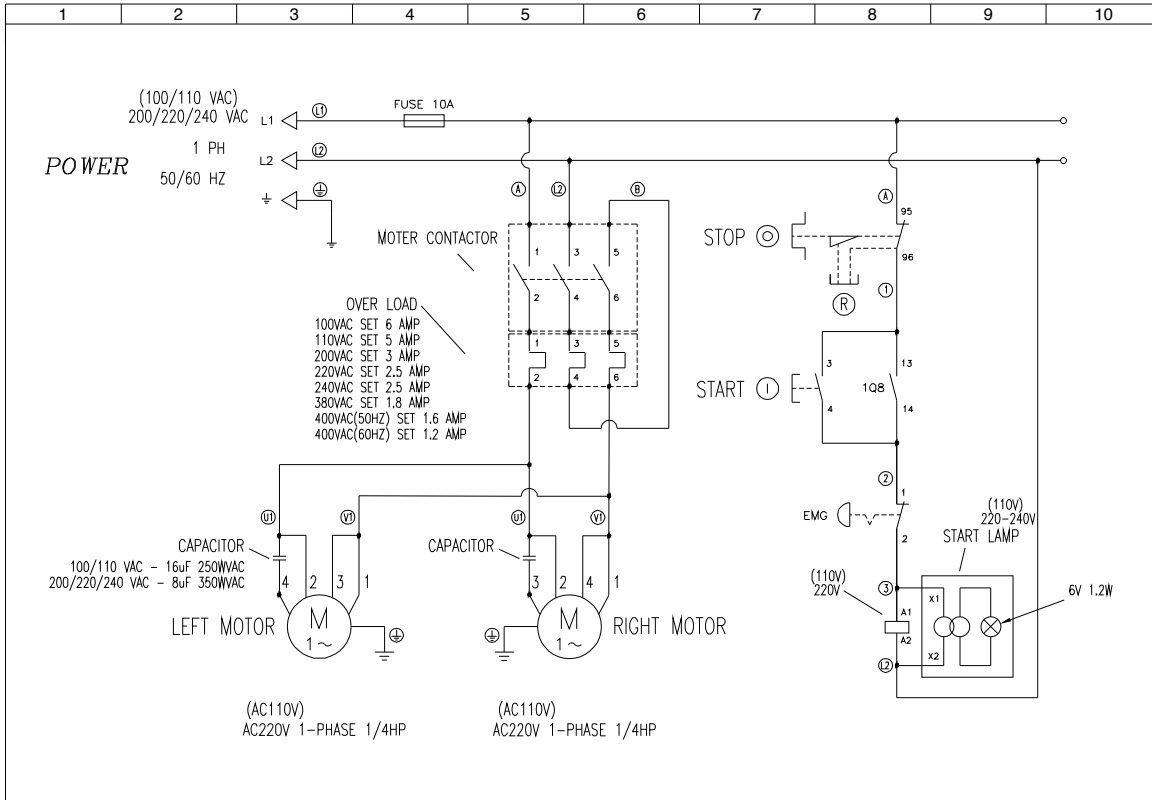
2)Power cable . . . . . 1.25mm<sup>2</sup>

3)Machine input . . . . . AC 110V/220V 1-Phase

## 5.2 Electric diagram







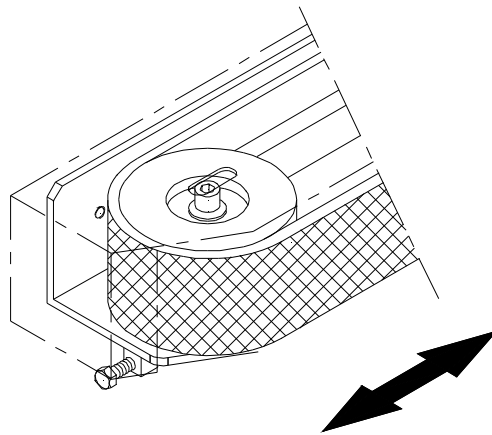
## ELECTRIC PARTS LIST FOR EXC-103SD

KEY NO	PART NO.	DESCRIPTION	Q'TY
1	7155BC20	EMG. SWITCH	1
	7158BZ12	BUTTON SEAT CONTACTOR NCx1	1
2	7066P001	1/2" CONNECTOR	1
3	7065C062	1/2" PROTECT TUBE	1
4	7066C064-1	1/2" 90° CONNECTOR	1
11	70560601	TERMINAL BLOCKS TB6P	1
12	7032SW01	CONNECTOR	1
13	71570002-01	BREAKER LC1-D09F7 110V	1
	71570003-01	BREAKER LC1-D09M7 220V	1
14	71570002-02	OVERLOAD PROTECTOR LR3-D106(4-6A) (110V)	1
	71570003-02	OVERLOAD PROTECTOR LR3-D086(2.5-4A) (220V)	1
15	7155AL01	BUTTON	1
16	7155AA03	BUTTON	1
	7158AZ01	CONTACTOR NOX1	1
17	7151AV01	POWER LAMP 220V	1
	7150AV01	BLANKIG PLUG	1
	7151AV02	POWER LAMP 110V	1
	7150AV01	BLANKIG PLUG	1
18	7025AG16	FIXED SEAT	4
19	72561003	FUSE	1
	7250FH01	FUSE SEAT	1
20	7155AL01-1	ENCLOSURE	1

## 6. TROUBLE SHOOTING

### 6.1 Belt adjustment

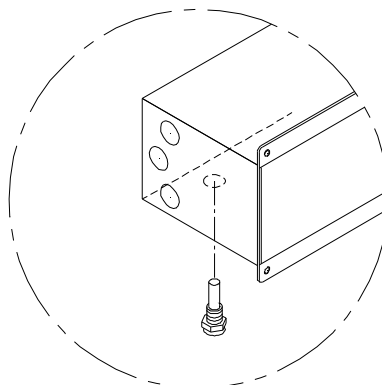
- 1) loosen the belt nut (A) to adjust the belt to a suitable tension (B).



### 6.2 Fuse replacement

Symptom: machine will not start to operate.

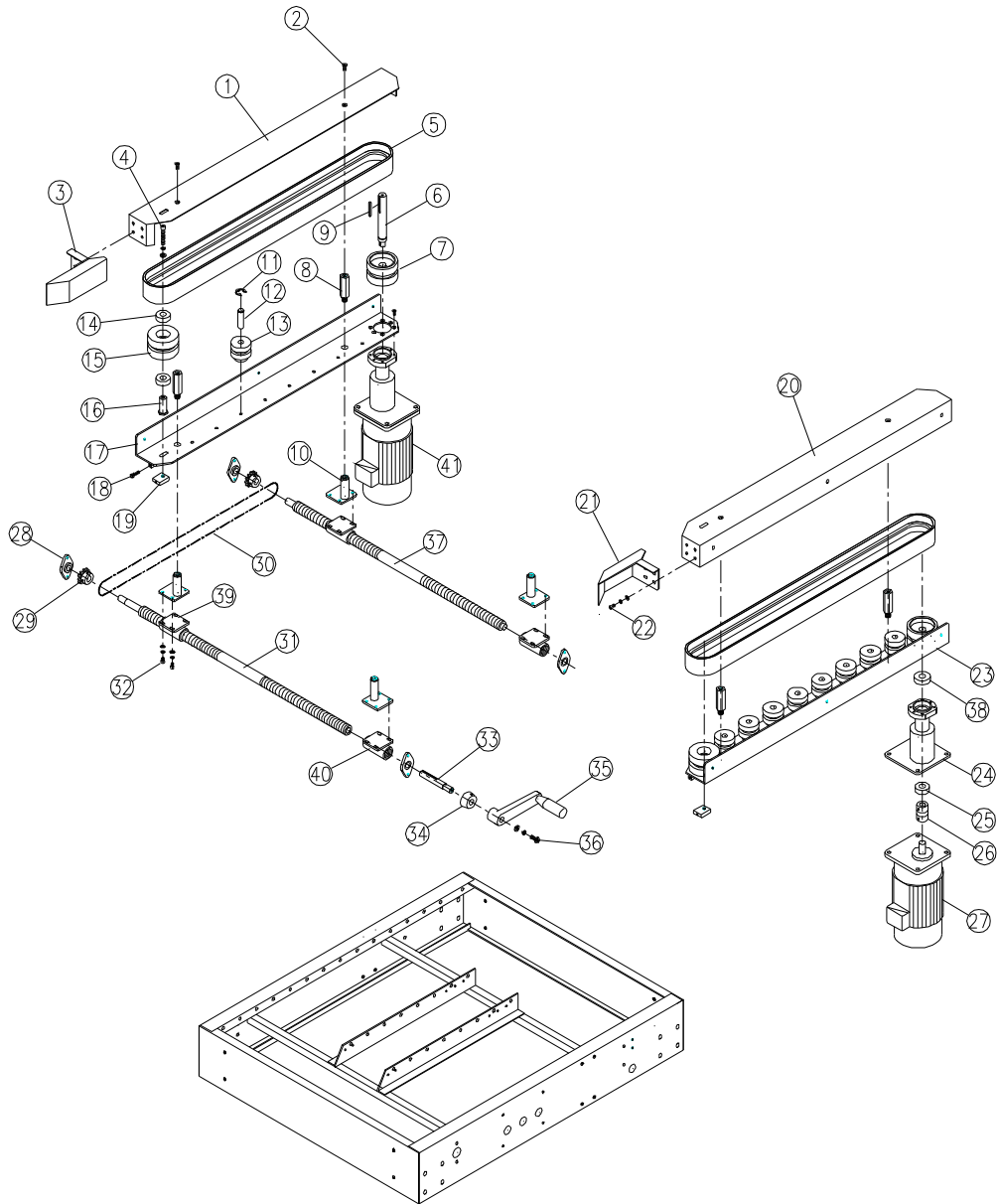
- (a) Please check the power input.
- (b) Release the E-stop button.
- (c) Press start button to release over load.
- (d) Check to see if the fuse is in good condition. If faulty, replace with new fuses as shown in the diagrams.
- (e) Confirm the steps above and re-start the machine.





# 7. PART LIST

## 7.1 Side belt



## PARTS LIST FOR EXC-103SD

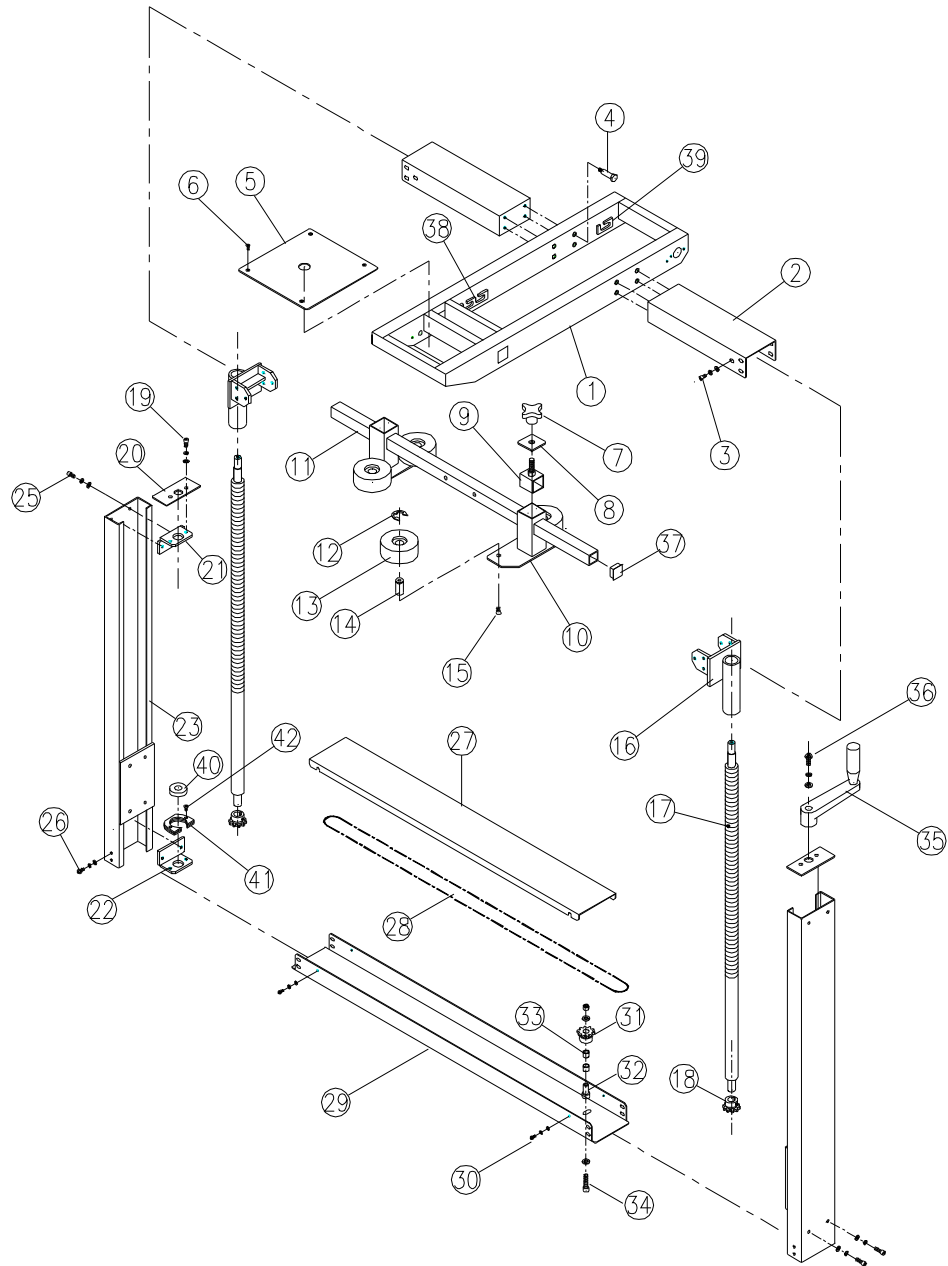
KEY NO	PART NO.	DESCRIPTION	Q'TY
1	CA3006L0	SIDE BELT COVER	1
2	10170610	SCREW M6*10L & S.W & W	4
3	CA3010L0	GUIDE PLATE	1
4	10100870	SCREW M8*70L & W	2
5	CA302700	BELT	2
6	CA30250A	MOTOR SHAFT	2
7	CA301900	PULLEY DRIVER	2
8	CA301700	SPEDIAL SCREW	4
9	10925300	KEY 5*5	2
10	CA301600	SUPPORT SHAFT	4
11	11301200	RING STW-12	16
12	CA301400	PULLEY SHAFT	16
13	CA301300	PLASTIC PULLEY	16
14	30300030	BEARING 6003ZZ	4
15	CA301100	PULLEY FOLLOWER	2
16	CA301200	PULLEY SHAFT	2
17	CA3005L0	SUPPORT COLUMN	1
18	10130545	SCREW M5*45L	2
19	CA301800	ADJUSTMLNT BLOCK	2
20	CA3006R0	SIDE BELT COVER	1
21	CA3010R0	GUIDE PLATE	1
22	10100612	SCREW M6*12L & S.W & W	8
23	CA3005R0	SUPPORT COLUMN	1
24	CA302900	MOTOR SEAT	2
25	30300030	BEARING 6003ZZ	2
26	CA303000	UNIVERSAL JOINT	2
27	745111R1	MOTOR 110V/60HZ, T18:1	1
	745122R1	MOTOR 220V/60HZ, T18:1	1
	745122R2	MOTOR 220V/50HZ, T15:1	1
	745124R2	MOTOR 240V/50HZ, T15:1	1
	745138R1	MOTOR 380V/50HZ, T15:1	1
	745140R1	MOTOR 400V/50HZ, T15:1	1
28	CA302000	SHAFT SEAT	4
29	CA302200	CHAIN SPPOCKET	2
30	3240S355	CHAIN	1
31	CA300700	SPINDLE WIDTH ADJUSTMENT	1

S.W: SPRING WASHER

W: WASHER



## 7.2 Column



## PARTS LIST FOR EXC-103SD

KEY NO	PART NO.	DESCRIPTION	Q'TY
1	CA10010A	TAPING SET SUPPORT	1
2	CA10110A	SUPPORT SET	2
3	10100612	SCREW M6*12L & S.W & W	12
4	CA101500	LINING	8
5	CA10040A	COVER PLATE	1
6	10140406	SCREW M4*6L	4
7	CA101600	HANDLE KNOB	2
8	CA100900	LOCKING BRACKET	2
9	CA100800	SCREW KNOB	2
10	CA100500	COMPRESSION ROLLER SEAT	2
11	CA101000	SUPPORT BAR	1
12	11301700	RING STW-17	4
13	CA100600	COMPRESSION ROLLER	4
14	CA100700	COMPRESSION ROLLER SHAFT	4
15	10140610	SCREW M6*10L	4
16	CA200900	SPINDLE SUPPORT	2
17	CA200700	HEIGHT ADJUSTMENT SPINDLE	2
18	CA200800	CHAIN WHEEL	2
19	10100612	SCREW M6*12L & S.W & W	4
20	CA20040A	COVER PLATE	2
21	CA200200	SET PLATE	2
22	CA200300	SET PLATE	2
23	CA20010A	COLUMN	2
24			
25	10100612	SCREW M6*12L & S.W & W	8
26	10100612	SCREW M6*12L & S.W & W	8
27	CA201200	CHAIN PLATE	1
28	3240S356	CHAIN	1
29	CA201100	CHAIN COVER	1
30	10190410	SCREW M4*10L & S.W & W	4
31	CA201600	CHAIN WHEEL	1
32	CA201700	CHAIN WHEEL SHAFT	1
33	CT212100	BUSH Ø10 x Ø12 x 10L	2
34	10100635	SCREW M6*35L & S.W & NUT	1
35	CA201500	HANDLE CRANK ARM	1

S.W:SPRING WASHER

W:WASHER



### 7.3 Machine body

